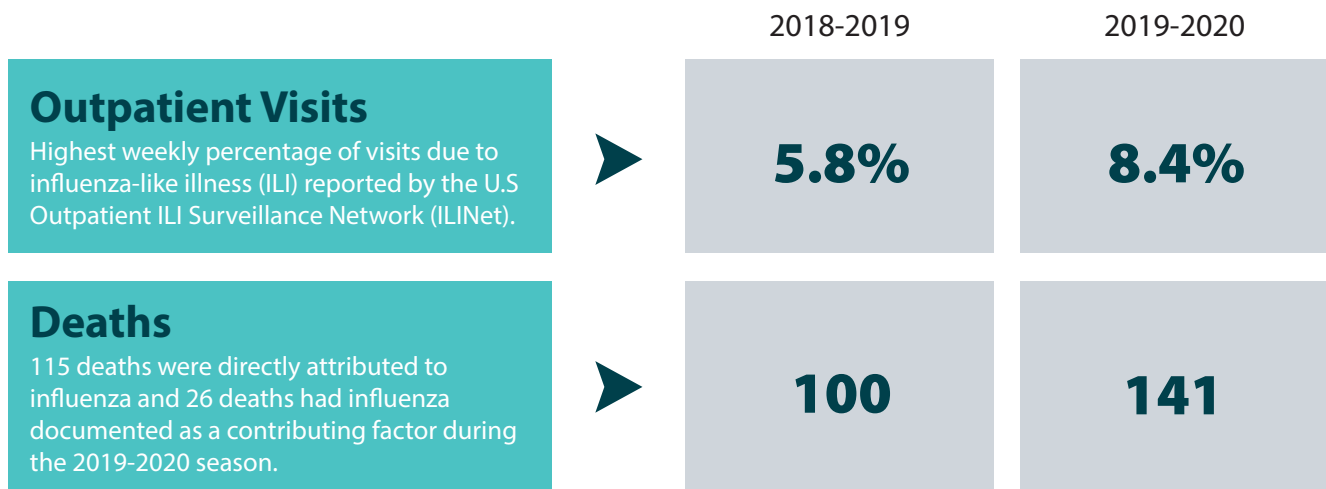
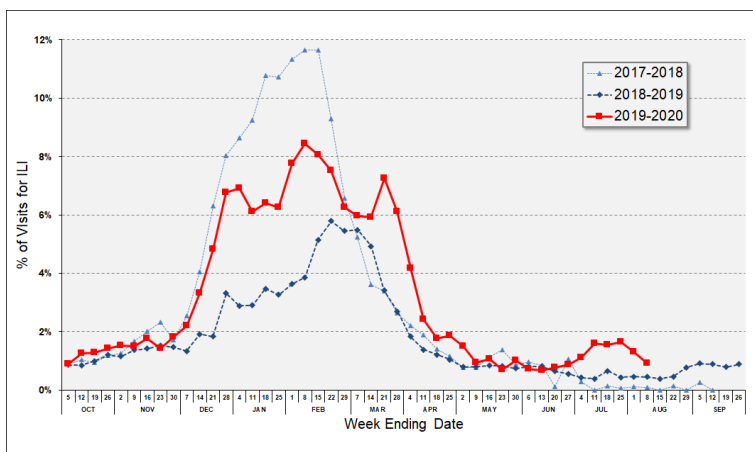


Influenza is not a nationally notifiable disease, nor is it a notifiable disease in Kansas; therefore, the burden of influenza is monitored through other surveillance methods.

Kansas Flu by the Numbers



Percentage of visits for ILI reported by ILINet Sites
Oct. 2017-July 2020



Laboratory-confirmed influenza viruses detected from specimens tested at Kansas Health and Environmental Laboratories

Oct. 2019-May 2020

Influenza subtype	# of specimens
A/H1	68
B (Victoria lineage)	5
A (not subtyped)	4

*ILI and COVID-like illness (CLI) have similar presentations, therefore it might be indistinguishable when sites report and complicate this data.

ILI = fever (>100°F) with cough and/or sore throat, in the absence of a known cause other than influenza

CLI = fever and cough or shortness of breath or difficulty breathing or the presence of coronavirus diagnosis code

To learn more about influenza surveillance in Kansas visit www.kdheks.gov/flu/surveillance.htm. Data on this website are updated weekly during the influenza surveillance season.